

sedus

Swivel and visitor chairs
netwin



For well-being: Sedus netwin.

netwin owes its name to the double mesh membrane in the backrest, which radiates an abundance of lightness whilst also providing an impressive level of comfort. But the name also expresses the added value which this attractive office chair offers: Improved ergonomics for relaxed and efficient working.

As a versatile swivel and conference chair, it fits perfectly into any office environment, and offers surprising value for money.

Owners will soon wonder how they ever lived without it. A chair which embodies exactly what Sedus promises with the concept of productive well-being.

Design: Michael Kläsener





The perfect ergonomics reduces pressure and frees your mind.

Sedus netwin combines the transparent lightness of the mesh look with the comfort of a fully upholstered chair. The one-piece, generously proportioned backrest frame provides an elegant solution. The double membrane, which is made

from patented high-tech fabric, is elaborately framed – unique for a chair in this class. This technically and visually impressive design ensures high sitting comfort and optimal distribution of weight for users of all sizes.



Protected intervertebral discs. The height of the lumbar support can be adjusted depending on the height of the user, in order to provide just the right support for the spinal column.

A relaxed approach to work. Individually adjustable armrests support the arms and thus prevent tension in the neck and shoulders.



Dynamic sitting.

The Sedus "Similar" mechanism holds and supports your back in every movement and at the same time prevents the annoying "shirt-pulling" effect. The extreme opening angle of the backrest of up to 32° enables various comfortable sitting positions, reclining almost to a lying position.

Softly cushioned.

Even in the lowest sitting position, the bodyweight is absorbed by the gas lift mechanism for height adjustment with mechanical depth springing, thus reducing stress on the back.



Suitable seat size. The seat cushion can be pushed forwards or backwards, in order to provide just the right amount of support for the legs of the individual and thus ensure

ergonomically correct sitting. Thanks to the large adjustment range of 380 to 440 mm, the sliding seat can accommodate users of widely varying sizes.



The right hold. Not too hard, not too soft: The backrest pressure can be adjusted according to bodyweight. Thus, the backrest offers good support without dominating.

Particularly practical for multi-user workstations: The patented spring force quick adjustment is simply activated with a handle.

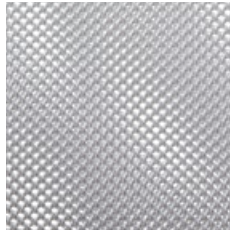


Intuitive adjustment. The controls are intuitive to use, conveniently positioned, clearly marked and functionally formed, in order to make individual adaptation particularly easy.

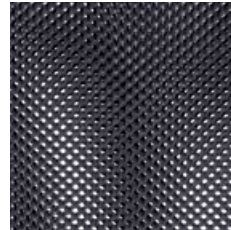
Fantastic freedom of choice in style and design.



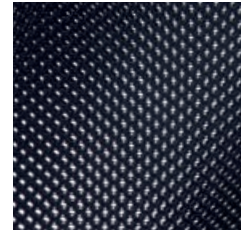
M3W white



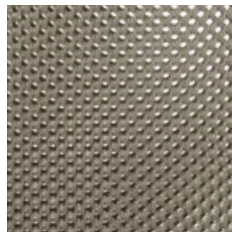
M3N light grey



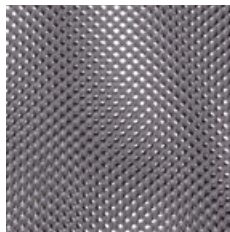
M3A anthracite



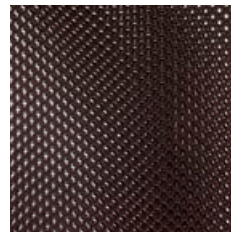
M3G black



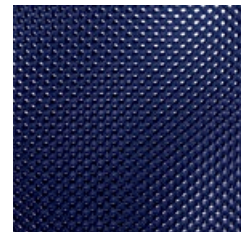
M3E beige-grey



M3H mid grey



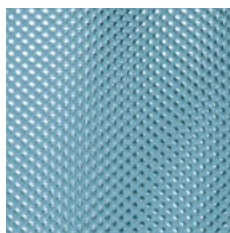
M3C brown



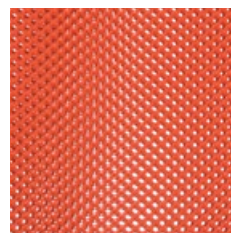
M3B dark blue



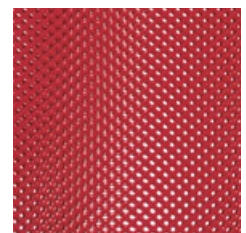
M3D green



M3K petrol



M3J orange



M3F red

Their design is striking, yet the Sedus swivel and visitor chairs never seek the limelight; instead they integrate perfectly into various design schemes. The rich variety of attractive mem-

brane colours are harmoniously blended with the upholstery fabrics and frame versions. The well-conceived design repertoire offers great scope to create an individual office ambience.



Backrest: M3H mid-grey
Seat covering: Gaja G66061



Backrest: M3G black
Seat covering: Gaja G60999



Backrest: M3B dark blue
Seat covering: Gaja G61003



Backrest: M3W white
Seat covering: Gaja G60999



Backrest: M3K petrol
Seat covering: Gaja G66061



Backrest: M3N light grey
Seat covering: Gaja G65005



Backrest: M3D green
Seat covering: Gaja G68035



Backrest: M3A anthracite
Seat covering: Gaja G67004



Backrest: M3F red
Seat covering: Gaja G64089



Backrest: M3C brown
Seat covering: Gaja G61003



Backrest: M3E beige-grey
Seat covering: Gaja G64017



Backrest: M3J orange
Seat covering: Gaja G62011

In addition to the 12 colours of the backrest membrane, the seat cushion is available in 12 shades of leather and over 140 different seat coverings and colours. This results in a massive variety of possible combinations, completely

according to the customer's choice, whether tone on tone or with colour contrast. From the functionally minimalist, classic business style, to creative, fresh colour accents or cosy, warm colour harmonies, everything is possible with this range.



Swivel chair with height-adjustable armrests, plastic base



Swivel chairs with 3D adjustable armrests, polished aluminium base and white aluminium base



Swivel chair without armrests, plastic base, version 2



Cantilever chair with armrests, chromed frame (also stackable)

Adjustable armrests.
With height adjustment or 3D adjustment for adjustment of height, depth and width.

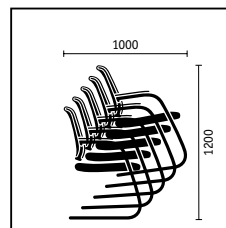
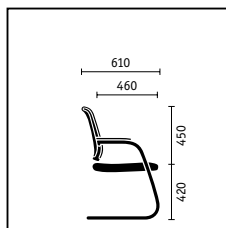
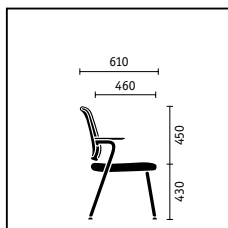
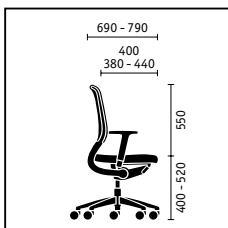
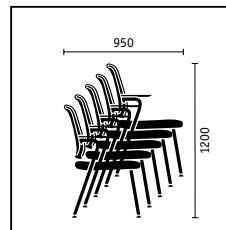
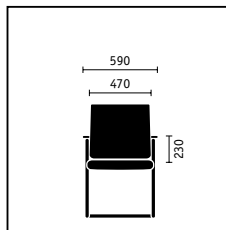
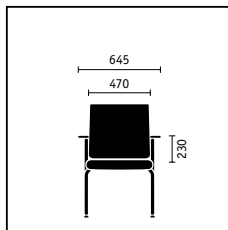
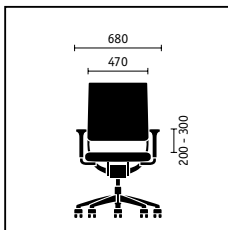


4-leg model with armrests, chromed frame (stackable)



	Task chair	4-leg	Cantilever
Seat mechanisms			
"Similar" mechanism	■		
"Similar" mechanism with seat tilt adjustment	□		
Backrest technical features			
Height-adjustable lumbar support	■		
Quick backrest pressure adjustment	■		
Seat height adjustment			
Gas lift mechanism with mechanical depth springing	■		
Gas lift mechanism	□		
Frame versions			
Plastic base in black	■		
Plastic base in black, version 2	□		
Aluminium base, powder-coated in black	□		
Aluminium base, powder-coated in white aluminium	□		
Polished aluminium base	□		
Steel frame, powder-coated in black		■	■
Steel frame, powder-coated in white aluminium		□	□
Steel frame, chromed		□	□
Model colour (mechanism and plastic parts)			
Black	■	■	■
Armrests			
Without armrests	□		
Height-adjustable armrests	■		
3D adjustable armrests with Softtouch finish	□		
Integral armrests with plastic finish		■	■
Features			
Sliding seat (with 60 mm depth adjustment)	□		
Hard castors for soft floors	■		
Soft castors for hard floors	□		
Stainless steel glides		■	
Plastic glides		□	□
Felt glides		□	□
Stackable (up to 5 chairs)		■	□

■ standard
□ optional



Further information and planning data are available to download at: www.sedus.com



Companies, people and the environment all benefit.

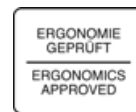
Sedus is committed to transforming working in an office into a profitable experience for all, for the benefit of both companies and their employees. This mission statement is laid down in the corporate policy and encompasses all of the aspects which are so vitally important for office work.

Place 2.5 stands for the new office culture of productive well-being. The concept is based on perfect ergonomics, functionality and working conditions. Design, light, acoustics, atmosphere and air are just some of the other elements. The result is office environments designed to enhance well-being, in which people like to work and are therefore more productive.

Sedus' thinking is holistic and customer-oriented: companies today require not just office furniture but needs-orientated solutions for efficient working processes. What they want is future-proof office working environments that are consistent with the corporate culture. Sedus delivers just that with its comprehensive, flexible product range and with its individual consulting and planning services.

Quality and sustainability have been the cornerstone of Sedus' success for more than 50 years now. In addition to working in a way that conserves resources, designing products which are recyclable, using ecologically tested materials and being energy-aware in its manufacturing, Sedus pursues one thing above all else: product quality that lasts, because that's what is best for the environment. The latest example: innovative laser edging. All products which carry the emblem "lasered by Sedus" guarantee seamless edge processing of the highest quality. In terms of aesthetics and material technology, the advantages are impressive: flawless beauty, robust durability and a bonus for the environment.

For further information, visit www.sedus.com



Company:

- DIN EN ISO 9001
- DIN EN ISO 14001
- EMAS III-audited environmental management

Around the world, Sedus adheres to the principles of the UN Global Compact for human rights, labour standards, the environment and anti-corruption.

netwin:

- Toxproof
- Safety-tested
- Tested ergonomics
- Quality Office
- AGR – Campaign group for healthier backs

- Good Environment Choice Australia
- Greenguard
- if product design award
- Test winner Stiftung Warentest



www.sedus.com