

brainstorm





The art of linking minds.

In the modern globalised economy, knowledge is our productive capital. Knowledge that needs to be compiled, shared, and exchanged in order to grow. Sedus brainstorm has been developed to create the ideal conditions for these processes. The comprehensive, flexible range of furniture

and accessories promotes knowledge transfer, team, and project work within the company in its own unique way. By means of intelligent functionality, encouraging communication, and the emotional atmosphere of productive well-being: properties synonymous with Sedus Place 2.5.



Design: special®



Forging new links: Sedus personal desk.

When it comes to designing workshops, brainstorming sessions and seminars, the one-person table on castors opens up a whole new range of opportunities. The tables can be freely positioned within the space, for swift re-grouping as necessary. The desktop is optionally height-adjustable. As such, a wide variety of teaching approaches can be realised, and creativity within groups

specifically fostered. Moreover, every process is characterised by movement, which is not only good for the brain but the back as well. Particularly convenient is the large table-top and the open design, featuring a central column and lateral supports to ensure plenty of leg room. The tables are stackable, allowing you to create more space as necessary by pushing them together into a compact group.



A unit of thought.

Thanks to its ingenious concept, the personal desk actively promotes learning. The mobile table is stackable and can thus be parked to save space, features optional height adjustability, and is truly versatile.



Activate your synapses: brainstorm stacking table.

Dynamic workshops or conventional teaching, spontaneous project meetings, or intense discussions: these tables accommodate everything a company could need for successful teaching and group processes. A whole spectrum of configurations can be simply achieved and just as easily changed again.

Interfaces. The tables can be linked at the sides or at the front, thus allowing block or row formations.





Fitted with castors, the tables are especially suited to quick turnarounds in multifunctional spaces. Depending on the application, various solutions exist for swift access to electricity, data networks, and the necessary conference technology.

Practical. Thanks to the fold-up leaf design, the mobile tables are easily stacked and moved to one side.





Setting a trend: brainstorm individual tables.

Conventional individual tables in the Sedus brainstorm design provide the ideal basis for knowledge exchange in training and meeting rooms, but also in informal meeting points such as in the bistro or break-out rooms. Upon request, the tables may be fitted with two castors; they can also be linked together. Modesty panels covered in high quality fabric are an option which serves to heighten the visual appeal.



Network connection. With integrated power points and intelligent cable guidance, every table has its own electricity supply and data connection.



“Roll”-play. All tables are available with optional castors for flexibility of application and swift turnarounds.



Space savers. If needed, the square tables can be quickly and easily stacked to make space.

Send and receive.

All brainstorm components enable straightforward access to electricity and data; depending on what's required, this may entail a variety of applications in multifunctional spaces, where participant numbers and work patterns fluctuate, or integrated solutions for permanent installation.

Clever. Whatever the table configuration, a simple to install electricity supply linking all tables is possible and requires only one floor box.



Plug & play. A system cable dump allows cable management of the mobile stacking tables, while connection panels allow access to all communication and conference technology and are perfectly integrated into the table-top.



Out of sight. All electricity and data network connections are hidden beneath the table.



Organised. An optional cable box can be used to accommodate power supply units, chargers, etc., concealing cable connections as they are guided down the table support to the floor.



Spontaneous. Adaptive media connectors are simply clipped on, meaning no space is sacrificed on the table top.



Integrated. Integrated power points provide the necessary communication and conference technology.



Great guidance. Cable clips are used to guide the electricity and data cables simply and safely.



Connected. All tables can be linked up quickly and easily – whether at the side or at the front.



Elegant solution. Functional perfection and visual appeal: lectern and personal desk castors are integrated into the chrome foot.



Customised. The table top of the personal desk can be tilted and optionally height-adjusted.



Child's play. An ergonomic handle makes light work of the stacking table folding mechanism.



Mobile. All brainstorm range components are either equipped with castors as standard or as an optional extra.

Privacy. Fabric-covered modesty panels are available in 14 attractive shades.

Promote exchange.



Four-leg frames are available in either a chrome finish or powder-coated in white aluminium and white.

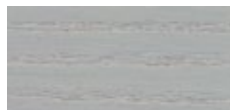


The stacking table, personal desk, noticeboards and coat rack feature white aluminium powder-coated frames and white or polished aluminium feet with a white steel column.

Real wood veneer



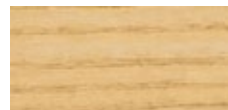
E10 Ash white



E46 Ash light grey



H11 Maple natural



E41 Ash natural



F31 Cherry natural



C11 Oak natural



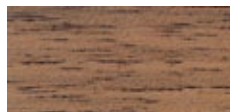
B26 Beech natural



G11 Peartree natural



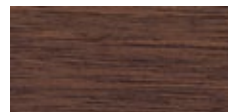
B21 Beech mid brown



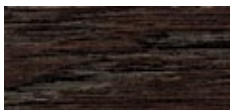
D12 Walnut natural



B23 Beech walnut varnish



D11 Walnut dark

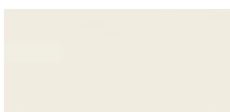


C17 Oak wenge varnish



E45 Ash black

Laminate



K14 pure white



K58 arctic white



K69 Acacia



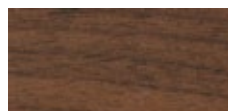
K60 Maple



K59 Beech



K72 Olive



K66 Walnut



K65 Zebrano



K71 Ebony

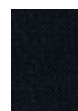


K70 graphite black



K16 dark grey

Modesty panel



Atlantic Fabric collection



personal desk, top dimensions 700 x 600 mm, top thickness 25 mm, mobile, tilting desktop, desk height 730 mm.



Optionally height-adjustable, adjustable from 730 mm to 1050 mm.



Stackable, fold-up desktop for space-saving storage; stacked dimension + 170 mm.



Lectern, mobile, height 1050 mm, 700 mm x 600 mm, laptop shelf, fabric-covered modesty panel in 12 shades, optional cable guidance along column.



Individual tables, square and rectangular, available in 5 sizes, top dimensions 700 x 700 mm, 800 x 800 mm, 1400 x 700 mm, 1600 x 800 mm, 4-leg frame, height 730 mm, optionally available with 2 locking castors; also available as narrow banquet table: 1600 x 550 mm.



Stacking table, T-leg, mobile, height 730 mm, top dimensions 1600 x 800 mm; stacked dimension + 170 mm.



Narrow noticeboard, mobile, 1900 x 890 x 600 mm, double-sided, steel frame, 4 lockable castors; stacked dimension + 50 mm.



Wide noticeboard, mobile, 1900 x 1440 x 600 mm, double-sided, steel frame, 4 lockable castors; stacked dimension + 50 mm.



Flipchart, using the hook-on single paper holder, the noticeboards can be used as flipcharts.



Coat rack, mobile, 1900 x 1440 x 600 mm, 2 lockable castors, steel frame, aluminium feet; stacked dimension + 50 mm.



Companies, people and the environment all benefit.

Sedus is committed to transforming working in an office into a profitable experience for all. For the benefit of both companies and their employees. This mission statement is laid down in the corporate policy, to which the thoughts and actions of everyone at Sedus are bound. It is an ideal which encompasses all of the important aspects for office work today and tomorrow and, in order to achieve it, Sedus relies on the areas of competence Holistics and Customer Orientation, Quality and Sustainability, and the concept Place 2.5.



With the concept Place 2.5, Sedus has developed a unique and innovative approach – the new office culture of productive well-being. The concept is based on perfect ergonomics, functionality and working conditions and is embedded in office environments designed to enhance well-being, in which people like to work, and are therefore more productive. Design, light, acoustics, atmosphere and air are just some of the most important elements.

The concept is testimony to Sedus' holistic and customer-orientated way of thinking. After all, companies today do not need more pieces of office furniture, but rather seamless and needs-orientated solutions for efficient working processes. They need future-proof office working environments that are consistent with the corporate culture. Sedus delivers just that with its comprehensive, flexible product range catering for all requirements and with its individual consulting and planning services.

Quality and sustainability have ultimately been the cornerstone of Sedus' success for more than 50 years now. In addition to working in a way that conserves resources, designing products which are recyclable, using ecologically tested materials and being energy-aware in its manufacturing, Sedus pursues one thing above all else: product quality that lasts, because that's what is best for the environment.

For further information, visit www.sedus.com and www.place2point5.com



Company:

- DIN EN ISO 9001
- DIN EN ISO 14001
- EMAS III-audited environmental management

Around the world, Sedus adheres to the principles of the UN Global Compact for human rights, labour standards, the environment and anti-corruption.

brainstorm:

- 5-year Sedus guarantee
- Safety-tested



www.sedus.com